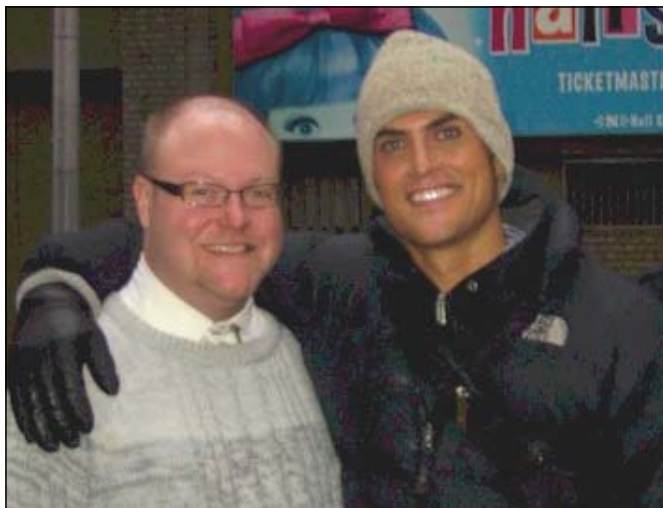


randolph county public library

randolphlibrary.org

Volume XVI No. 10 • April 2008

NEWS



Vocalist Lane Ragsdale with Cheyenne Jackson, star of the musical *Xanadu* and the film *United 93*, in Manhattan.

Ragsdale's latest to showcase Broadway

♣ Vocalist Lane Ragsdale's new cabaret show will celebrate some of the best of the Great White Way's musical selections.

"An Evening with Lane Ragsdale on Broadway" will go up at 7 p.m. Thursday, May 1, at the Asheboro Public Library. The concert, sponsored by the Friends of the Library, is free and the public is invited.

"This show is out-and-out Broadway and will have something for everyone," Ragsdale says. "I hope everyone will leave with a smile on their faces and a song on their lips."

The show will include a number of special guests and will feature Ragsdale's accompanist and arranger Lisa Johnson.

Shepard to talk about building a life on \$25

♣ Shortly after graduating from college, Adam Shepard left home with nothing more than a tarp, a sleeping bag, an empty gym bag, the clothes on his back and \$25.

His objective was to find out if after one year he could lift himself out of poverty and homelessness. The result was *Scratch Beginnings: Me, \$25 and the American Dream*, published this year by SB Press in Chapel Hill and picked up by HarperCollins for national hardback release in 2009.

Fresh from appearances on the Today Show, NPR, Fox News and CNN, Shepard will talk about his experiences during a Friends of the Library program at 7 p.m. Thursday, May 22, at the Asheboro library.

The program is free and the public is invited. Shepard's experiment was a response to Barbara Ehrenreich's *Nickel and Dimed*, to show that the American Dream was not out of reach for people with limited means, as Ehrenreich implied.

His goal — which he achieved — was that within a year, he would live in a furnished apartment, own a working car and have \$2,500 in the bank. He would



Adam Shepard will discuss his book *Scratch Beginnings*, 7 p.m. Thursday, May 22, at the Asheboro library.

continued on page 3

PAT coordinator Ratliff wins national award — see page 2

Archdale

336-431-3811
 Fax 336-431-4619
 10433 S. Main St.
 Mon, Wed, Fri 9-6;
 Tues, Thur 9-8;
 Sat 9-5

Asheboro

336-318-6800
 Fax 336-318-6823
 201 Worth St.
 Mon-Thur 9-9; Fri 9-6;
 Sat 9-5

Randolph Room

336-318-6815
 Mon, Thur-Sat 9-5
 Tues, Wed 9-9

John W. Clark

(Franklinville)
 336-824-4020
 111 Sumner Place
 Mon-Fri 2-6; Sun 2-5

Liberty

336-622-4605
 Fax 336-622-4605
 239 S. Fayetteville St.
 Mon, Wed, Fri 9-5;
 Tues, Thur 9-7; Sat 9-1

Ramseur

336-824-2232
 Fax 336-824-2232
 1512 S. Main St.
 Mon-Fri 8:30-5:30

Randleman

336-498-3141
 Fax 336-498-1139
 122 Commerce Sq.
 Mon-Fri 10-6; Sat 10-1

Seagrove

336-873-7521
 530 Seagrove Plank Rd.
 Mon-Thur 1-7; Fri 12-6
 Sat 10-3

Extension Service

336-318-6816 or 336-318-6817
 Mon-Fri 9-5

Dial-A-Story

336-318-6833

*from
 the
 director*



Amanda Ratliff wins national award

♣ **Amanda Ratliff, Franklinville-Ramseur Parents As Teachers (PAT) coordinator, was honored as a "2008 Parent Educator of the Year" on April 1 at the Parents as Teachers National Center in St. Louis.**

Amanda and four other recipients received the international award from Sue Stepleton, President/CEO of the Center, which serves as PAT headquarters. Randolph County Partnership for Children Executive Director Pauline McKee nominated Amanda for the award. Testimonials from families praising Amanda for the difference she has made in their lives accompanied the nomination.

Amanda's many successes involve her work with families with low educational levels and with immigrant families, encouraging parents to get their GED and to read with their children in English and in their native language. She refers families in need to local agencies for assessment. She reports bi-monthly to the Franklinville town commissioners about her activities. She created an early learning group at a community center for the families she serves, where she developed lasting friendships with community volunteers eager to serve children in the area. One of those groups features a senior church women's sewing group working with families. For the past three years, on her



Franklinville-Ramseur Parents as Teachers (PAT) Coordinator Amanda Ratliff receives the 2008 Parent Educator of the Year award from Sue Stepleton, national PAT CEO.

own volition and at her own expense, Amanda has traveled to Oaxaca, Mexico, the ancestral home of many immigrant families in Franklinville, to learn more about their schools and their culture.

Amanda has been employed as a PAT coordinator for the Franklinville-Ramseur area since 2002. A graduate of Appalachian State University, Amanda is currently working on a Master's Degree in Early Childhood Education from UNCG. She will graduate in May 2008.

We're extremely proud of Amanda Ratliff, PAT Educator of the Year!

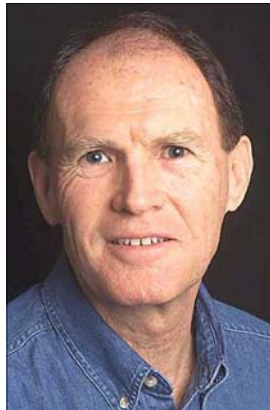
Protect yourself!

Join us at 4:30 p.m. Thursday, April 24, at the Asheboro library for "Be Safe. Stay Safe: Tips That Can Save Your Life." Detectives Bernie Maness and Jason Chabot of the Randolph County Sheriffs Department will provide tips and techniques to avoid risky situations. The program will feature basic self-defense techniques, demonstrations and advice on how to protect yourself. It's free, open to all ages and is family-oriented.



Improve your pix with Tom Gillespie

♣ Award-winning photojournalist Tom Gillespie will advise photographers on improving photographic composition at 7 p.m. Thursday, May 8 at the Asheboro library.



Tom Gillespie

The program, sponsored by the Friends of the Library, is free and the public is invited.

Gillespie's career in journalism and photojournalism spans 30 years. A graduate of the Randolph Community College photography program, his work

has appeared in regional, national and international newspapers and magazines including *Time*, *The New York Times* and *USA Today*.

A Navy veteran who also served 16 years in the U.S. Coast Guard, he has won numerous awards for his photography. He is currently a public affairs specialist with the N.C. Zoological Park.

His program will cover topics including the 50/50

syndrome, the participant/observer approach, the rule of thirds, creating a center of interest, previsualization and compositional elements.

Shepard builds a life from scratch

continued from page 1

not allow himself to use his college degree, credit history or previous contacts.

Shepard graduated from Merrimack College in Andover, Massachusetts, in 2006 with degrees in business management and Spanish, and shortly thereafter embarked on his journey.

Since the publication of *Scratch Beginnings*, Shepard has been featured in *The Christian Science Monitor*, *The New York Post*, the *News and Observer*, and on 64 program across the country as well as on major news networks.

He lives in Raleigh, and is the nephew of Carolyn Chisholm of Asheboro.

Asheboro Reads

Next up for Asheboro Reads is *Recipes for a Perfect Marriage* by Morag Prunty, 2 p.m. Tuesday April 29. For May 27, it's *Kabul Beauty School* by Deborah Rodriguez.

Luna Book Club

The Luna Book Club will discuss *Crow Lake* by Mary Lawson at 7 p.m. April 29, and *The Commoner* by John Burnham Schwartz on May 27.

Spanish stories

Asheboro library storytimes presented in Spanish by Carolina Aguero continue at 11 a.m. on the first Saturday of each month, and by Victoria Alvarado at 11 a.m. on the last Saturday of each month.

Alvarado and Aguero are teachers in the Randolph County Schools.

Book sale

There will be no Friends of the Library book sale in April as the new Friends Bookshop at 226 Sunset Avenue is readied for a grand reopening at 2 p.m. Tuesday, May 27.

After the grand opening, bookshop hours will be 10 a.m.-2 p.m. Tuesdays and Thursdays, and 9-3 p.m. on the last Saturday of each month.

**Take our survey:
tell us how
we are doing**

We want to know what the library does best, what it could do better, and what kind of experience you have when you visit.

To share your comments, go to

www.randolphlibrary.org/survey.html. An email address is requested for verification purposes, but your response is not associated with it and remains anonymous.

Friends of the Randolph Public Library

YES! I'd like to become a Friend and support the wonderful programs sponsored by the Friends each year:

NAME _____

ADDRESS _____

PHONE _____

- Student \$5
- Adult \$15
- Family..... \$25
- Patron \$100
- Benefactor..... \$250
- Lifetime..... \$500
- Corporate Sponsor..... \$_____

Mail to: Friends of the Library
P.O. Box 2806
Asheboro, NC 27204
Memberships are tax deductible

YES! I'd like to help: ___Program planning___Program Receptions ___Book Sales___Membership

Randolph County Public Library

201 Worth Street
Asheboro, NC 27203

Return Service Requested

Non-Profit Organization
U.S. Postage
PAID
Asheboro, NC 27203
Permit No. 50

3RD PRE-SORT

Call us!

Renewals..... 318-6801

Children's Services..... 318-6804

Randolph Room..... 318-6815

Reference & Information.. 318-6800

memorials & donations

In Memory of: Archie Kenneth "Tunney" Farlow

By: Randolph County Genealogical Society

In Memory of: Claudine C. Bunch

By: Ed and Nancy Bunch
Carolina Benefit Plans/Ramsay, Inc.
Carolyn B. Everhart
Ann McGlohon and Jonna Libbert
Jackie, Josh and Alan Luria
Pierre and Dare Oldham
Rob and Dede Reese
Reviewers Book Club
Joyce and Roger Spoon
Joyce and Jerry Ward
Vera J. Winston

In Memory of: Adam W. "Jack" Beck

By: Joyce and Jerry Ward

In Memory of: Robert Dennis Crowley

By: Jo Ann H. Ball
Mr. and Mrs. Holland Brady
Michael T. Crowley, Sr.

In Memory of: Don W. Durham

By: Dr. and Mrs. J.R. Darwin

In Memory of: Lois Ethel Cartner Glascock

By: Dianne and Steve Wrenn

In Memory of: HESSIE S. Ivey

By: Faye V. Canoy

In Memory of: Reverend Jay Alan Hobbs

By: Ellen Byrum
Tony and Arlene Smith
Gail Swaringen, Raine and Nathan

In Memory of: Nellie Leonard

By: Susan Coltrane

In Memory of: Doris Lanier Talley

By: Dianne and Steve Wrenn

In Memory of: James Williams

By: Kim Newsom, Sara Baker and Jill Williams

In Honor of: Suzanne Tate

By: Susan Coltrane