



## LOCAL LANDMARK DESIGNATION REPORT

St. Paul's Methodist Episcopal Church, ca. 1879

(Exterior Designation)

401 High Point St., Randleman, N.C.

.32 acres; PIN# 7765051197

Randleman Township, Randolph County, N.C.

*Owner: North Randolph Historical Society*

## LOCAL LANDMARK SIGNIFICANCE SUMMARY

*St. Paul's Church, ca. 1879*, was originally founded in what was known as the village of Union Factory in 1855. It consisted of a small wooden structure that had been constructed on the present site, a hillside overlooking the nearby mill complex on Deep River. The land for the original small church had been donated by James Dicks, son of Peter Dicks of New Salem.

In 1868, *John Banner Randleman* and *John H. Ferree* purchased the factory and renamed it the Randleman Manufacturing Company. In 1878, these two industrial partners called for the erection of a new St. Paul's Church which they would donate to the community. In his homecoming speech in September of 1925, Reverend *Amos Gregson* gives credit to *John Banner Randleman* and *John H. Ferree* for providing the money and hiring the builders to construct the new brick St. Paul Church in 1879. Mr. Ferree and Mr. Randleman, as early community industrialist, were important not only as contributors to St. Paul's Church, but to

the community and town of Union Factory as providers of jobs to the local citizens. *The Town of Randleman is named in honor of Mr. John Banner Randleman.*

## **HISTORICAL CONTEXT AND FIELD DOCUMENTATION**

**St. Paul's Church, ca. 1879**, has been fortunate to have maintained its special structural and architectural integrity since its construction in 1879. St. Paul's Church was the first brick church constructed in Randolph County and used a simplified Greek Revival-style design with pointed-arch stained glass window behind the pulpit. Since its original construction in 1879 a wrought iron hand-rail was added, ca. 2000, and the window panes replaced ca. 1993.

St. Paul's Church's unique context in the history of the community of Randleman and the County of Randolph, in addition to its architectural significance as the first brick church in Randolph County, lies within the lives of some of the more influential members of the congregation. *J.H. Ferree and John Banner Randleman* cemented their place in the history of Randleman through, not only their part in the building of St. Paul Church, but their involvement in the early industrial boom that they helped to bring about to the area. John. H. Ferree not only held ownership in the Randleman Mills, but spread his influence beyond the community by holding ownership in the Naomi Cotton Mills and Central Falls in Randolph County.

## **FIELD DOCUMENTATION BIBLIOGRAPHY**

*Historical records maintained by the North Randolph Historical Society as Quarterly Vol. 1 Number 1. Walker, Carl. Homecoming at St Paul Church. Courier. 3 September, 1925.*

*Architectural History of Randolph County, N.C., Lowell McKay Whatley, Jr., 1985, p. 120, St Paul's Methodist Episcopal Church.*

*Bisher, Catherine W.A. Guide to the Historic Architecture of Piedmont N.C. University of North Carolina, 2003, Print*

*Briggs, Benjamin, Telephone Interview. February 2014, North Randolph Historical Society, Louise Hudson, Secretary, North Randolph Historical Society.*

*Blair, Joseph Addison, James Dicks, Reminiscences of Randolph County, 1890, North Randolph Historic Society.*

## **ST PAUL'S METHODIST EPISCOPAL CHURCH, ca. 1879,**

### **Randleman, N.C.**

#### **St. Paul's Church Local Historic Site Report and Architectural Review**

St. Paul's Methodist Episcopal Church was founded in the village of Union Factory in 1855, when a small wooden structure was built on the present site, a hillside overlooking the nearby mill complex on Deep River. In 1868, *John Banner Randleman* and *John H. Ferree* purchased the factory and renamed it the Randleman Manufacturing Company. Ten years later these two partners called for the erection of a new St. Paul's Church which they would donate to the community. Local brick mason *Peter Clark* and carpenter *Allen Redding* contracted to build the structure which was the first brick church in Randolph County. Clark used brick manufactured and assembled near the actual site of construction.

St. Paul's Church is a simplified Greek Revival-style church whose influence can be seen in its pedimented front gable, wide cornice boards and cornice returns on the rear gable. Although the building does not have the colonnaded porch often seen in the Greek Revival architectural style it is highlighted by round-arched windows and a multi-stage bell tower. The alternating pointed and scalloped shingling on the hip-roofed bell tower were probably added at some point after the initial construction as it is not always associated with this style and date of original construction.

The massing of the primary components of the exterior are highlighted by the round-arched, double-leafed entry with paneled doors under a corbelled brick round arch with round-arch windows. The projecting corbelled brick hoods on the

side building elevations include triple-hung, multi-pane sash. The original stone foundation provides support for the 1:5 common bond brick exterior walls.

A significant feature of the church is its interior which was designed and painted by Forsyth County artisan *Jules Korner* who is remembered locally today by his trade name “*Reubin Rink*”. Korner and two workmen lived in the town for several weeks, decorating the interiors of several homes as well as the church. Korner expanded on the theme of the pointed-arch stained glass window behind the pulpit to create a trompe-l’oeil of interior images and use of light.

The interior construction follows a shallow narthex with stairs at the entrance leading to the gallery above. Plaster walls, wide plank floors, and a repainted flush board wood ceiling highlight interior construction. A paneled balustrade is located at the front of the gallery that runs along three sides of the church. The gallery has a raised section for seating. There are two doors leading to the open nave/sanctuary and the projecting aspect at the far end behind a raised, curved dais with balustrade.

St. Paul’s Church was used continuously as a house of worship from its opening in 1879 until 1947, when the membership of St. Paul’s combined with the Naomi Falls Methodist congregation and built a new church on Main Street in Randleman. On May 1, 1968, the St. Paul’s Church was donated by the Methodist Church District to the North Randolph Historical Society along with .32 acres of land. *The United Methodist Church maintains ownership of the surrounding cemetery.* The St. Paul’s Church currently serves as a museum dedicated to preserving its history and the heritage of the Randleman/North Randolph County community.

## **MAPS, PLANS, & PHOTOS**

Geographical Information System data (GIS) reflecting the structure and its relation to nearby structures and streets is included as part of this report. Floor plans are maintained by the Randolph County Tax Department and are available for review. Digital photographs, including interior, are submitted as part of this

report. Records are maintained by the City of Randleman Planning Department and the Randolph County Historic Landmark Preservation Commission.

### **STATEMENT OF HISTORICAL SIGNIFICANCE**

The ca. 1879 St. Paul's Church meets Local Historic Landmark designation criteria outlined in the adopting Ordinance for Local Historic Landmark designation: **(1)** Critical part of the City of Randleman's and Randolph County's heritage by having value as a example of the cultural, economic, historic, and social heritage; **(2)** Exemplification of an architectural type distinguished by overall quality, design, materials, and craftsmanship; **(3)** the location of the St. Paul's Church, ca. 1879, provides a unique and distinctive structure representing an established and familiar visual presence in the City of Randleman and the Randolph County community.

---

**Hal Johnson, Chairman**

**Randolph County Historic Landmark Commission**





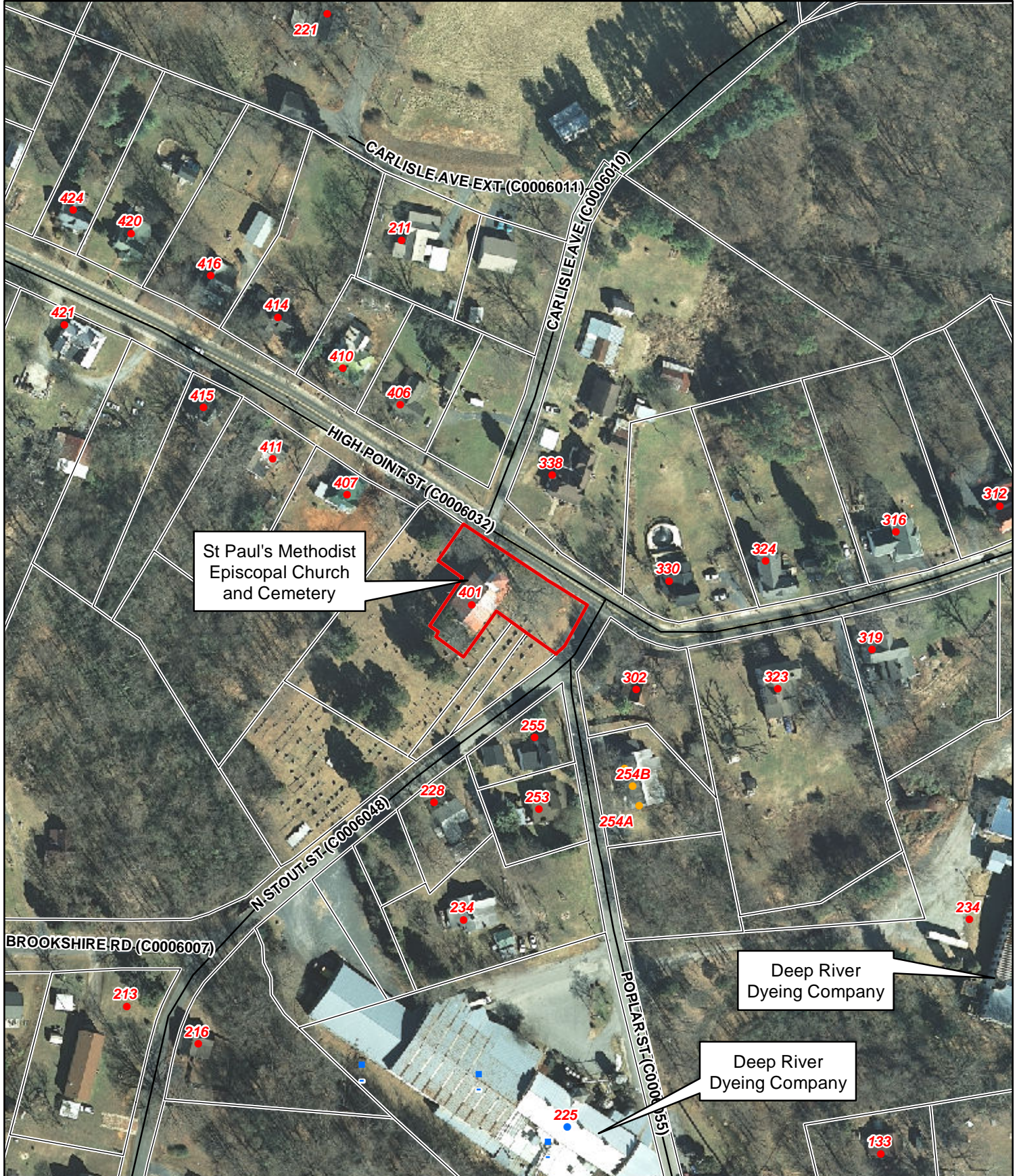
# Randolph County Planning and Development

Location: 7765051197

This map was prepared by Randolph County, NC for the County's internal use. Randolph County, its agents and employees make no warranty as to the correctness or accuracy of the information set forth on this map, whether expressed or implied, in fact or in law, including without limitation the implied warranties of merchantability and fitness for a particular purpose. Map is based on NC Coordinate System of 1983.

Date: 4/15/2014 - Planning.mxd - pztvm

1 inch = 150 feet





**St Paul's Methodist Episcopal Church, ca. 1879**



Figure 1: St Paul's Church; east side



Figure 2: St Paul's Sign



St Paul's Methodist Episcopal Church, ca. 1879



Figure 3: St Paul's Church front door



Figure 4: St Paul's Church; front view from High Point Street



**St Paul's Methodist Episcopal Church, ca. 1879**



Figure 5: St Paul's Church; west side

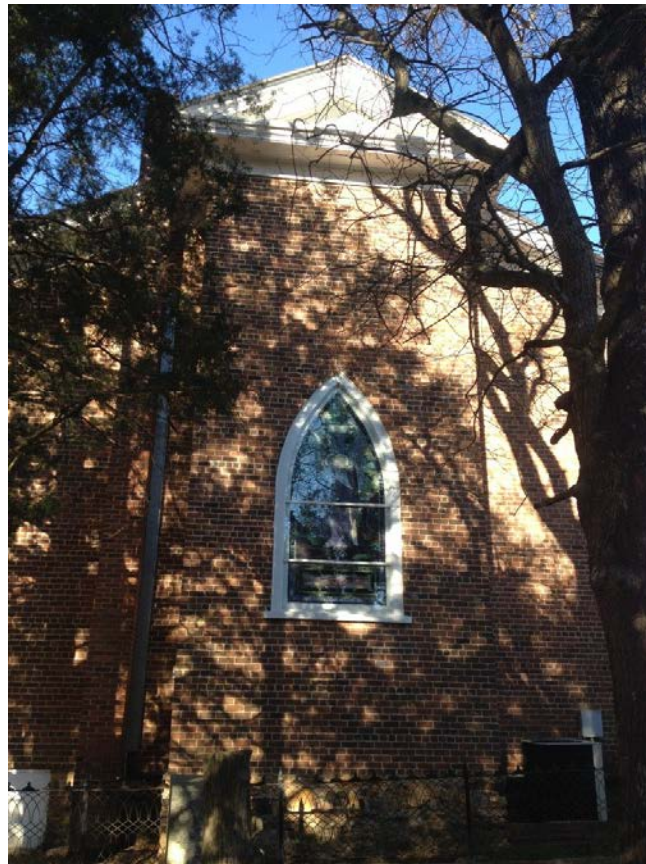


Figure 6: St Paul's Church; back side



St Paul's Methodist Episcopal Church, ca. 1879



Figure 7: St Paul's Church Cemetery



Figure 8: St Paul's Church; balcony view



St Paul's Methodist Episcopal Church, ca. 1879



Figure 9: St Paul's Church Trompe l'oeil

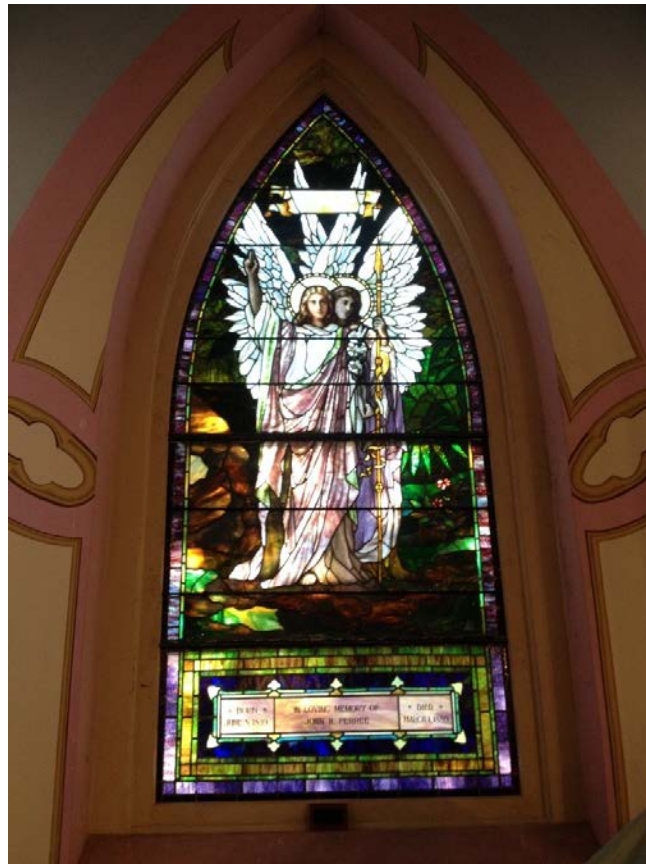


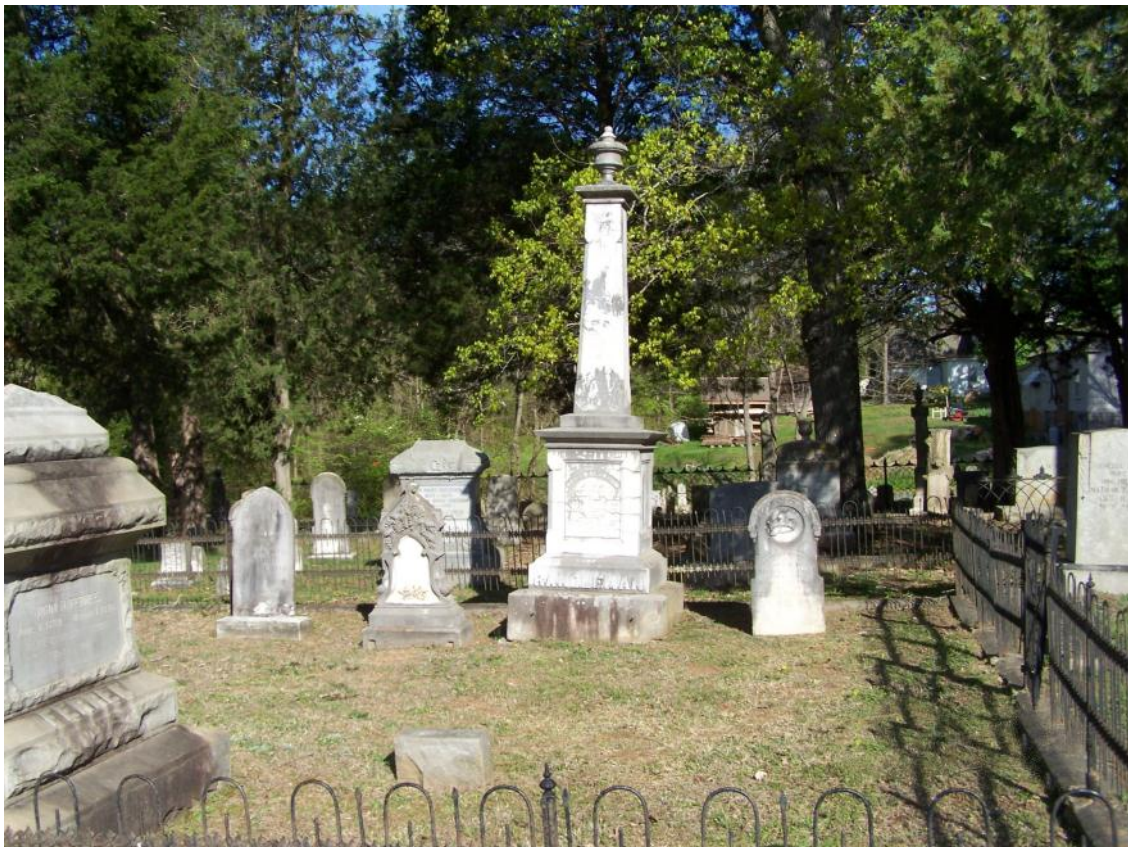
Figure 10: St Paul's Church Memorial Window



St Paul's Methodist Episcopal Church, ca. 1879



Adjoining Cemetery



Adjoining Cemetery



St Paul's Methodist Episcopal Church, ca. 1879



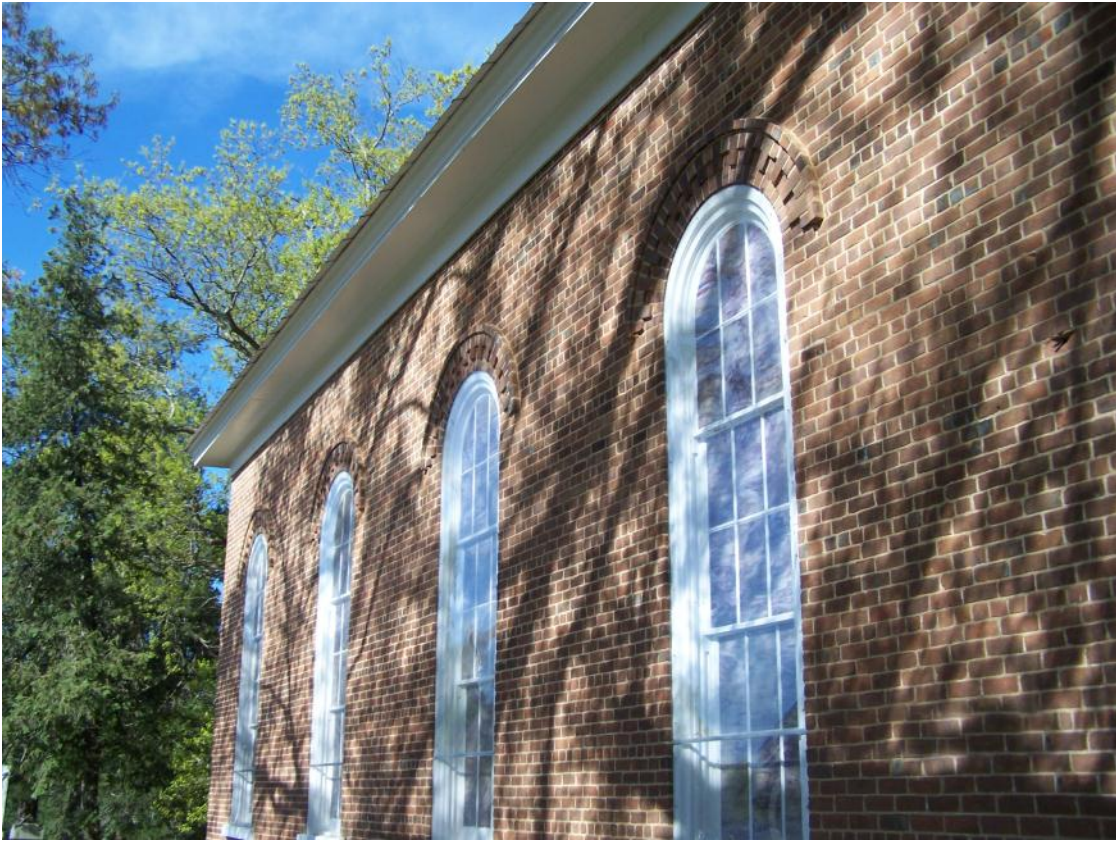
Adjoining Cemetery



Front view from High Point St.



St Paul's Methodist Episcopal Church, ca. 1879



Side view of Church



Front door



St Paul's Methodist Episcopal Church, ca. 1879



Bell tower



Stone foundation



St Paul's Methodist Episcopal Church, ca. 1879



Balcony stairwell



Original plank boarding



St Paul's Methodist Episcopal Church, ca. 1879



Wide plank flooring in balcony



Original wood beams in attic area